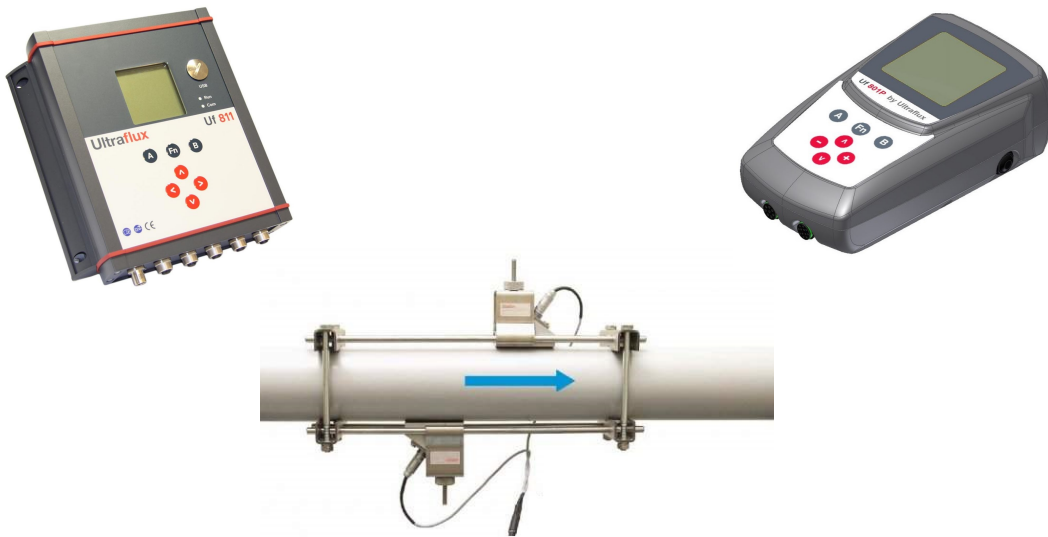


# Clamp-On Water Flow & BTU Meters

Reputable . Robust . Reliable



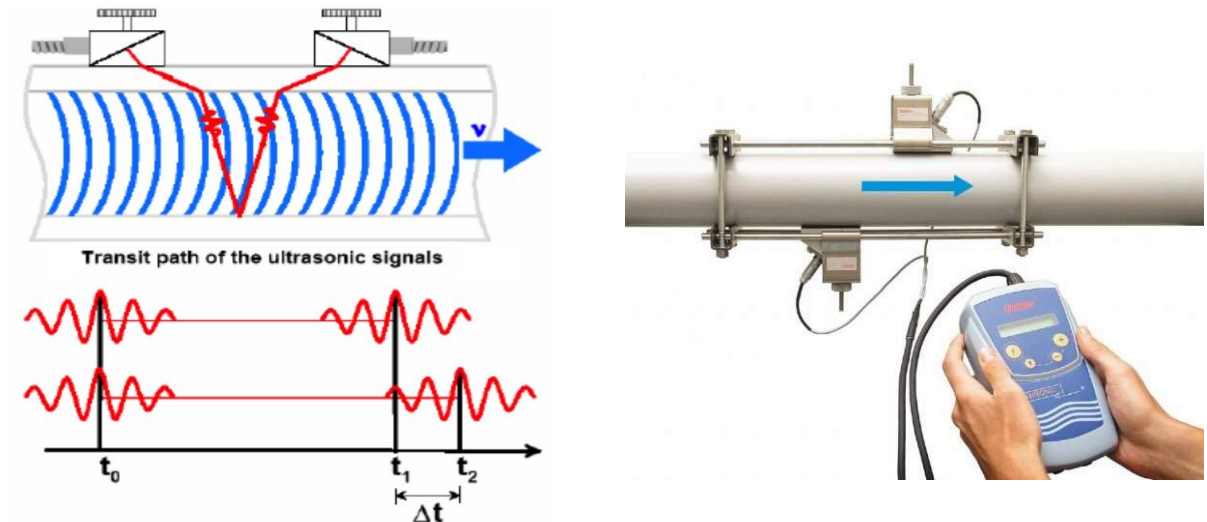
## Major Benefits

- > Affordable
- > High Accuracy (0.5%RD)
- > Easy Installation
- > Long Service Life (+15 years)
- > Zero Maintenance
- > Zero Drift
- > Zero System Downtime
- > External Measurement
- > No Pipe Cutting

## Main Applications

- > Main Header Flow
- > Pump Flow Control
- > Network Flow
- > Mag Meter Replacement
- > Check Metering
- > BTU Measurement (Heat/Cool)
- > HVAC System Efficiency
- > Network Leak Detection
- > Supply & Return Flow

## Operating Principle



The two transducers are used alternately as an emitter and receiver: the difference between the sound and the flowing fluid velocities creates a small time difference between upstream and downstream sound transmissions.

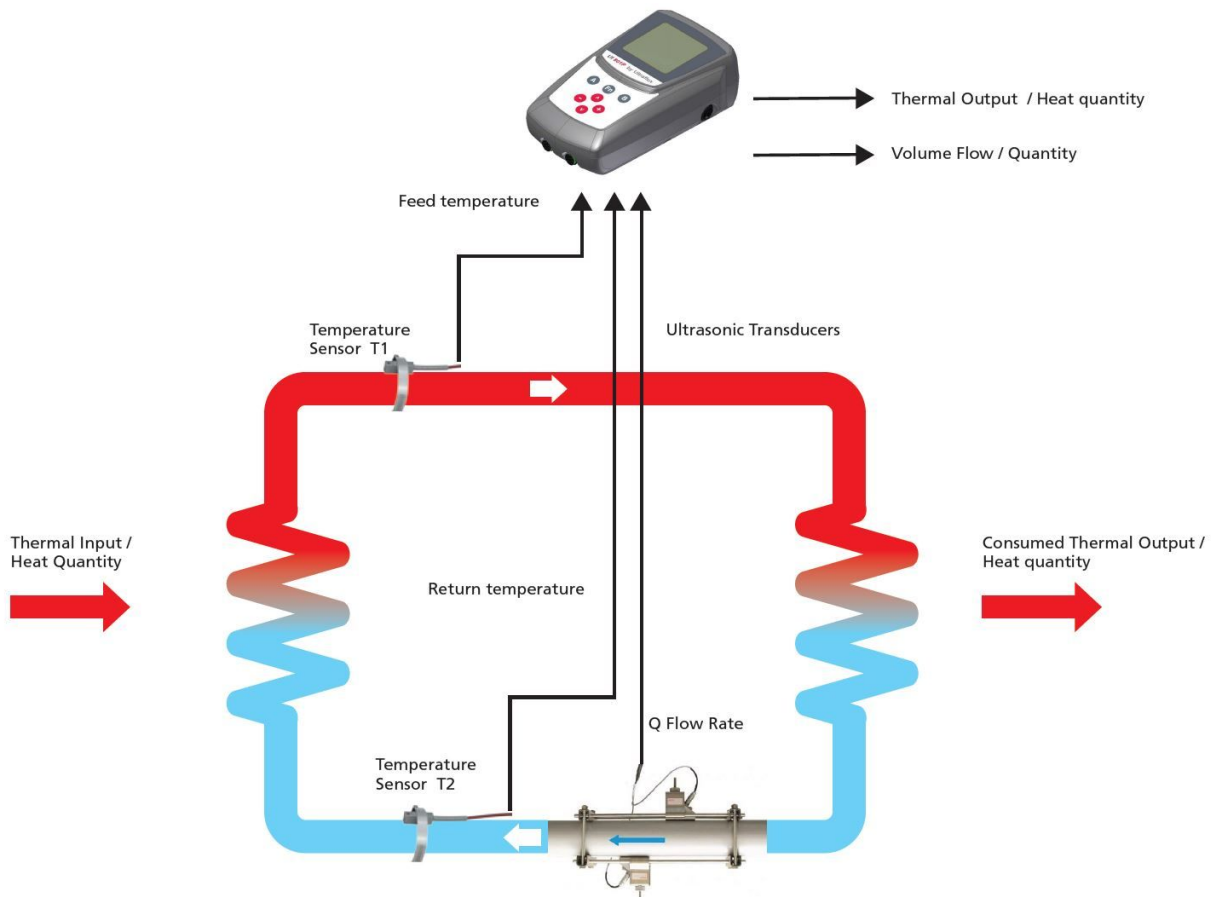
### Calculation of Volumetric Flow Rate

$$\dot{V} = k_{Re} \cdot A \cdot k_a \cdot \Delta t / (2 \cdot t_{fl})$$

where

$\dot{V}$	-	volumetric flow rate
$k_{Re}$	-	fluid mechanics calibration factor
$A$	-	cross-sectional pipe area
$k_a$	-	acoustical calibration factor
$\Delta t$	-	transit time difference
$t_{fl}$	-	transit time in the medium

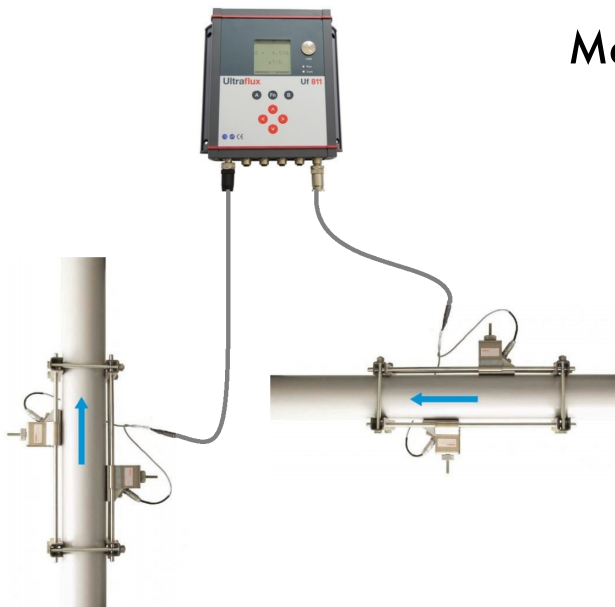
## Heating/Cooling Energy Measurement Without Pipe Cutting



Equipped with clamp-on flow sensors and two non-intrusive surface T probes, the Ultraflux clamp-on flowmeter functions as a BTU meter and measures and displays the two temperatures (inlet and outlet), their difference and compute the energy flow from the raw flow rate and the characteristics of the fluid. Actual Energy flow (delivered or exchanged) is displayed in kW and Energy is totalized in kWh.

## Dual Channel to Monitor Two Measurement Points

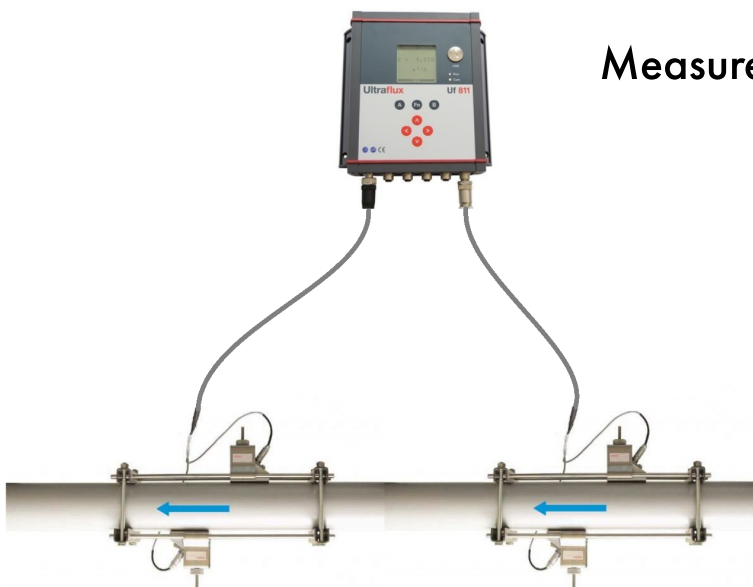
---



### Measurement on Two Pipes

#### Applications:

- > Supply & Return Flow
- > Network Leak Detection
- > Energy Monitoring
- > Energy Billing
- > Flow Addition or Subtraction



### Measurement on Same Pipe

#### Applications:

- > Redundancy for critical pipelines
- > Flow Averaging for Stable Readings

## Need Product Assistance?

Contact the Seztec Team at:

[info@seztec.com](mailto:info@seztec.com)

+1-816-204-0808



**METERING  
SOLUTION  
FOR EVERY  
INDUSTRY**

